



**TRANSPORTATION CABINET**

Frankfort, Kentucky 40622  
[www.transportation.ky.gov/](http://www.transportation.ky.gov/)

**Steven L. Beshear**  
Governor

**Michael W. Hancock, P.E.**  
Secretary

**April 23, 2014**

CALL NO. 101  
CONTRACT ID NO. 141219  
ADDENDUM # 2

Subject: Meade County, DPR 0058(023)  
Letting April 25, 2014

(1) Revised - Plan Sheet - R4

Proposal revisions are available at <http://transportation.ky.gov/Construction-Procurement/>.

Plan revisions are available at <http://www.lynnimaging.com/kytransportation/>.

If you have any questions, please contact us at 502-564-3500.

Sincerely,

A handwritten signature in blue ink that reads "Diana Castle Radcliffe". The signature is written in a cursive, flowing style.

Diana Castle Radcliffe  
Director  
Division of Construction Procurement

DR:ks  
Enclosures

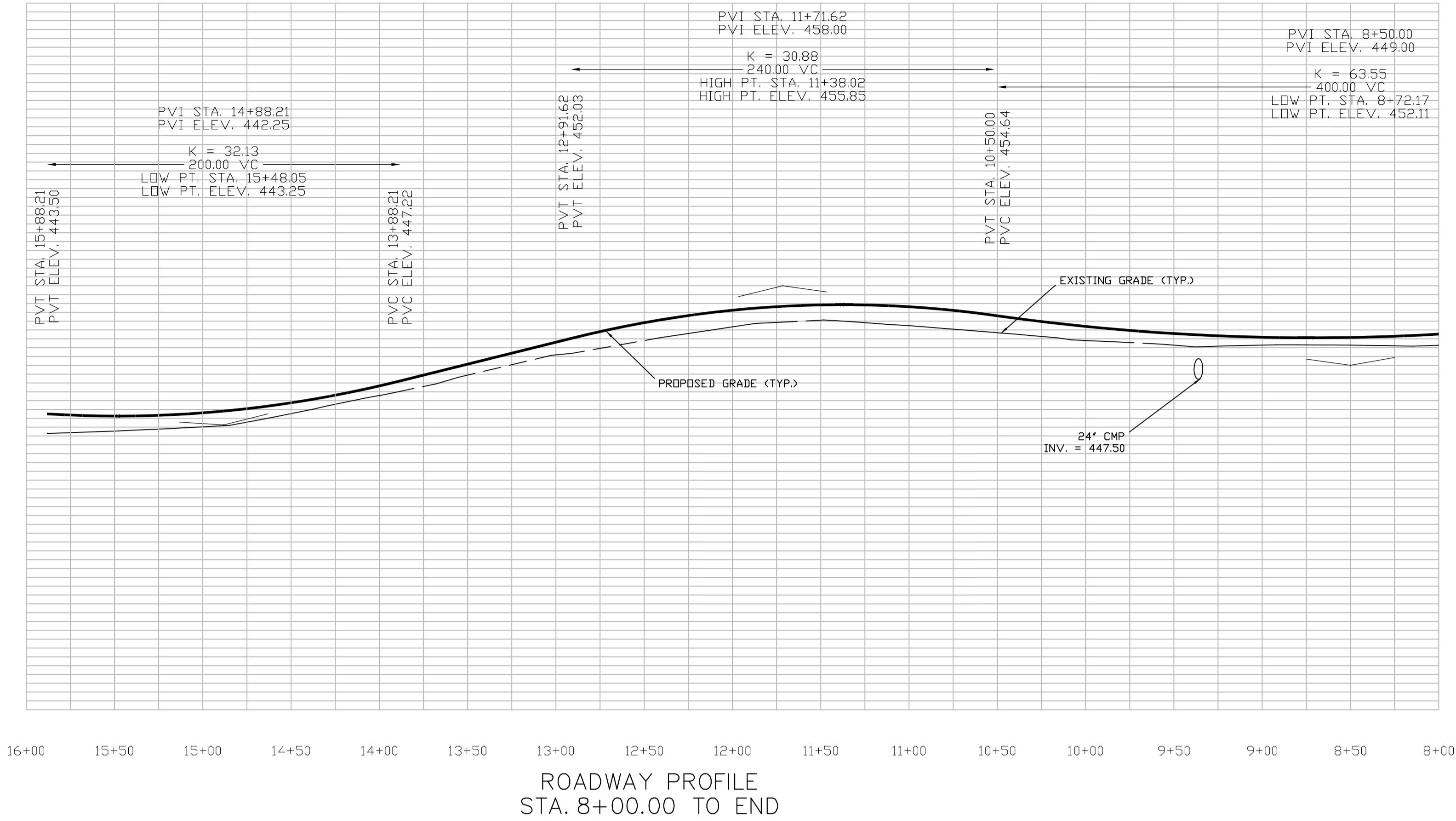


An Equal Opportunity Employer M/F/D

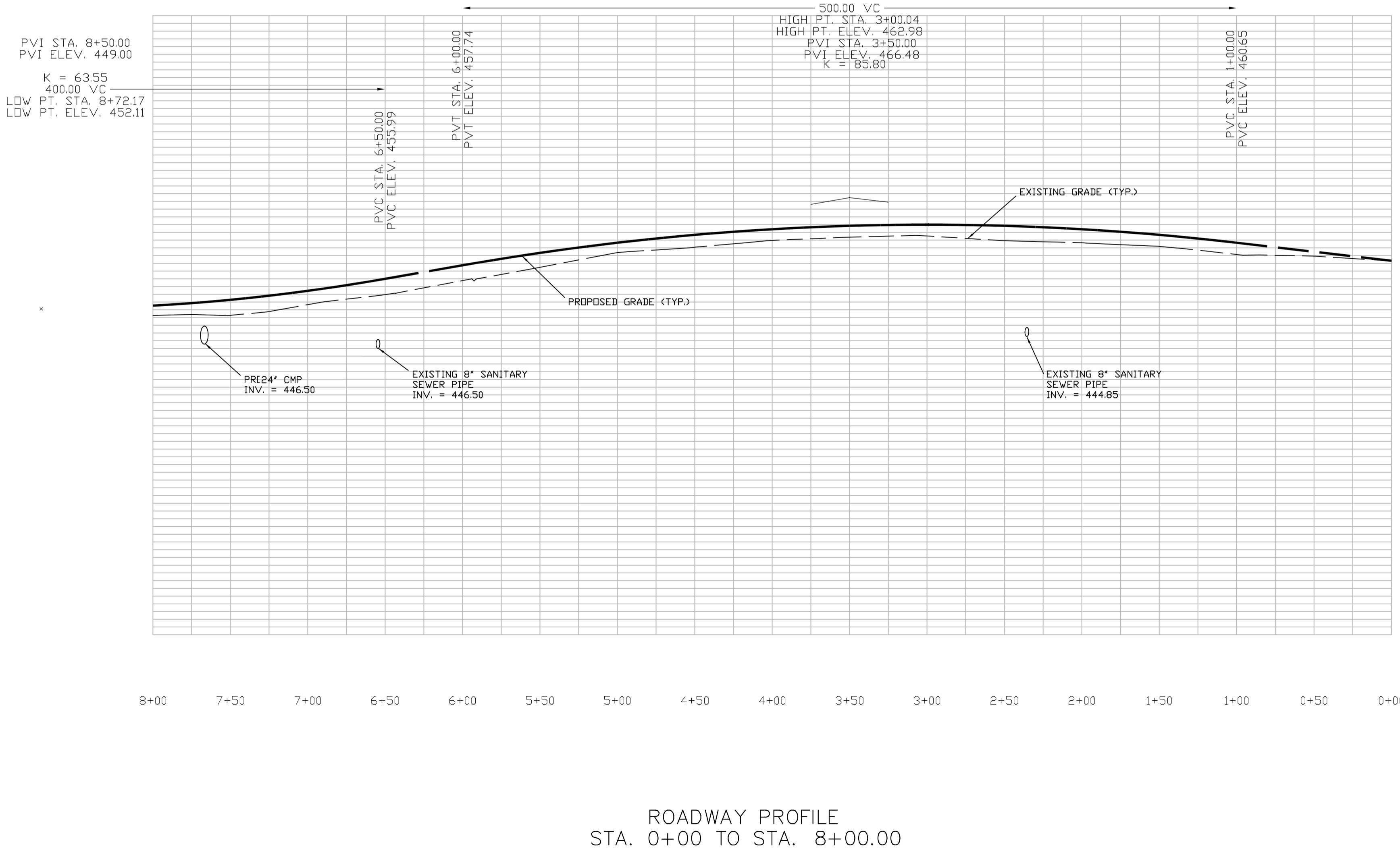
COUNTY OF	JOB NO.	SHEET NO.
MEADE	4-134.10	R4

**CALL BEFORE YOU DIG**

All utilities shown on these plans are approximate. Individual service lines are not shown. The contractor or subcontractor shall notify Kentucky 811 (phone number 811) forty eight hours in advance of any construction on this project. This number was established to provide accurate locations of existing below ground utilities. The contractor shall be responsible for becoming familiar with all utility requirements set forth on the plans in the the technical specifications, special provisions, and notes.



VERTICAL SCALE : 1"=10'  
HORIZONTAL SCALE : 1"=50'



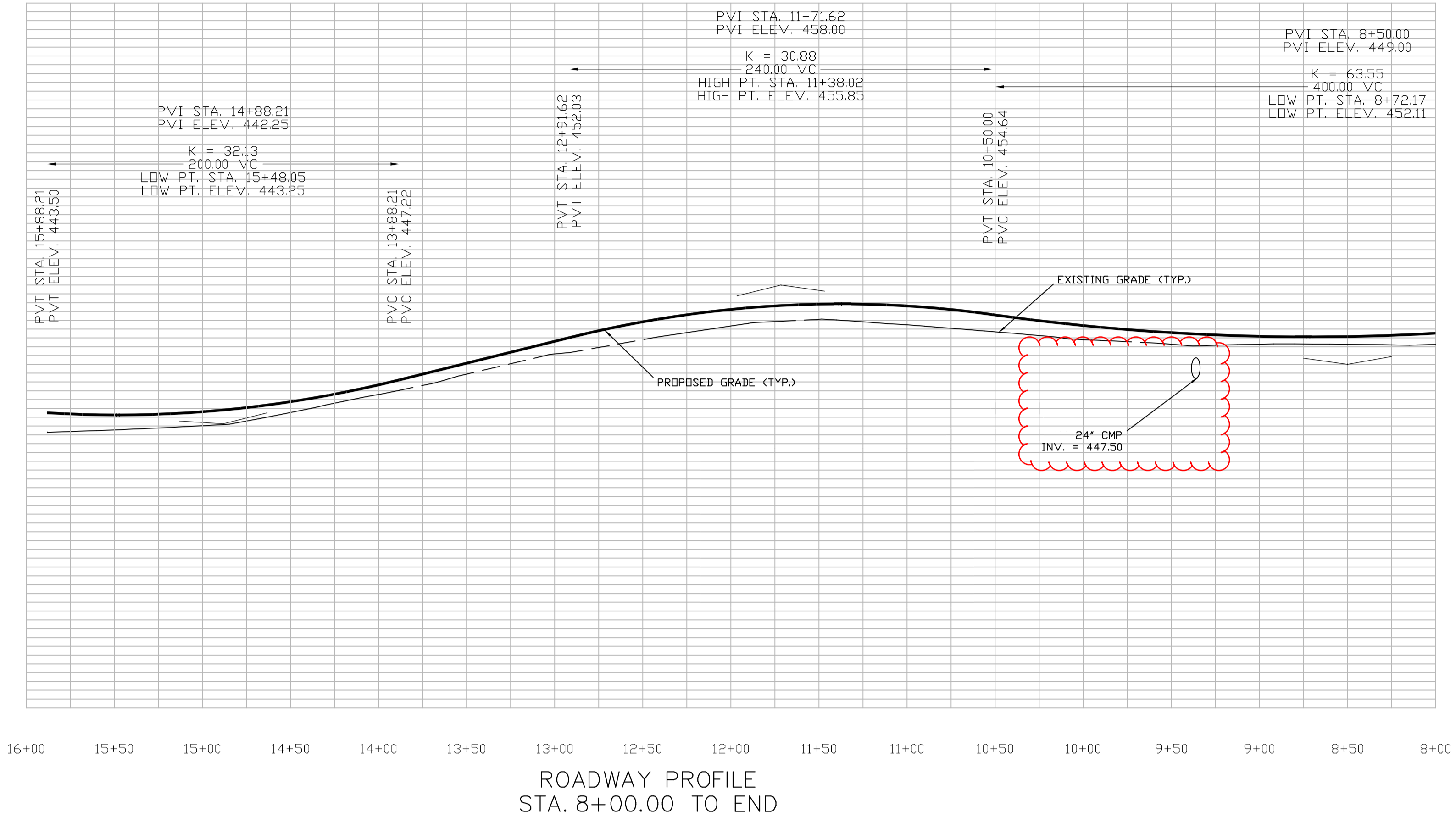
RIVERPORT ACCESS ROAD  
STA. 0+00 TO STA. 15+88.21

COUNTY OF	JOB NO.	SHEET NO.
MEADE	4-134.10	R4

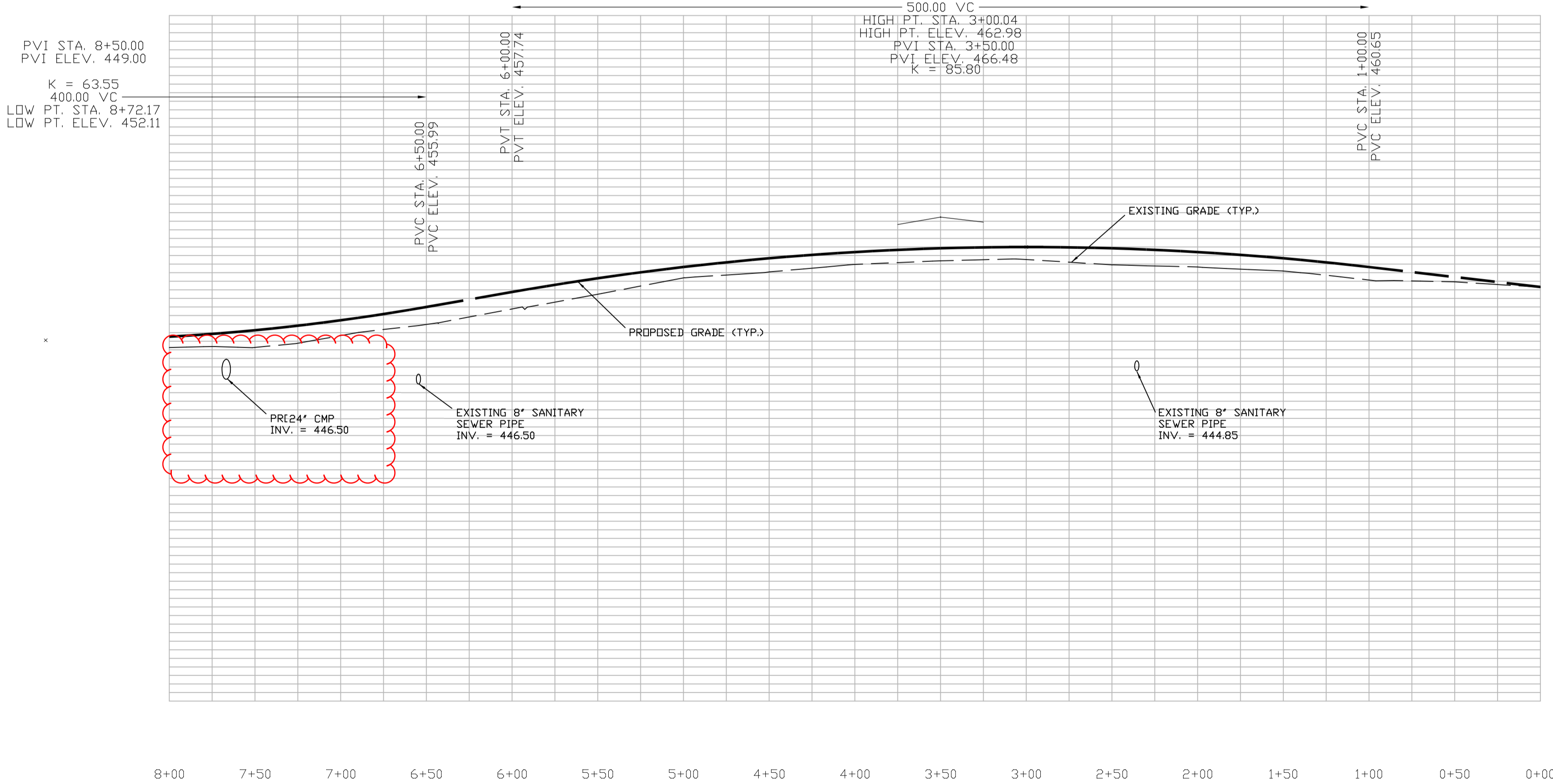
REVISED 04-22-2014

# CALL BEFORE YOU DIG

All utilities shown on these plans are approximate. Individual service lines are not shown. The contractor or subcontractor shall notify Kentucky 811 (phone number 811) forty eight hours in advance of any construction on this project. This number was established to provide accurate locations of existing below ground utilities. The contractor shall be responsible for becoming familiar with all utility requirements set forth on the plans in the the technical specifications, special provisions, and notes.



VERTICAL SCALE : 1"=10'  
HORIZONTAL SCALE : 1"=50'



RIVERPORT ACCESS ROAD  
STA. 0+00 TO STA. 15+88.21